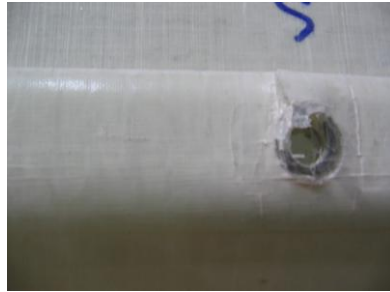


- D. Edge Repair (Major or minor depending upon number of occurrences).
Refer to Inspection section of this manual.



Edge Shear Out / Pull Out

(1) Edge Shear Out Repair

- (a) Trim loose fibers in damaged area.
- (b) Drill two new .25 inch (6.3 mm) diameter holes through the panel where the damage occurred according to the following requirements:
 - (i) Holes must be along the same centerline as the damaged hole.
 - (ii) The centers of the new holes must be approximately 1.5 inches (3.8 cm) from the center of the damaged hole.
- (c) Insert and fasten three new Lock Pins through the two new holes and existing damaged hole.

(2) Installation of Edge Patch (P/N 6000609)

- (a) Using Lock Pin / Collar Removal tool remove any Lock Pins/Collars that will be covered by Edge Patch on damaged panel mating edges

